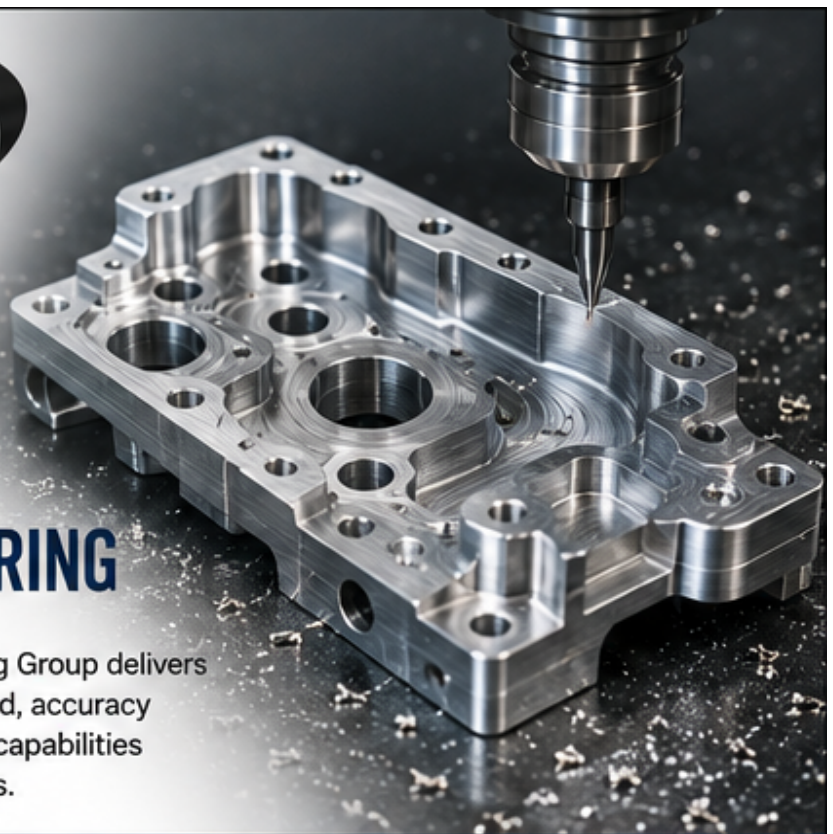




*Innovate. • Fabricate. • Deliver.*



## YOUR PARTNER IN PRECISION MANUFACTURING

From concept to completion, MTTI Manufacturing Group delivers high-quality, precision-machined parts with speed, accuracy and reliability. We combine advanced machining capabilities with modern technology to support your success.

### VERSATILE CAPABILITIES. PROVEN RESULTS.



#### PRECISION MACHINING

CNC & manual milling, turning, surface grinding and sawing for a wide range of materials and applications.



#### QUALITY YOU CAN COUNT ON

Committed to tight tolerances, consistent quality and continuous improvement.



#### RESPONSIVE & FLEXIBLE

Quick quotes, short lead times and the flexibility to meet your unique needs.



#### BUILT ON PARTNERSHIP

We work with you as an extension of your team to help your business succeed.



#### 3D PRINTING

Rapid prototyping and functional part production for faster development and lower lead times.

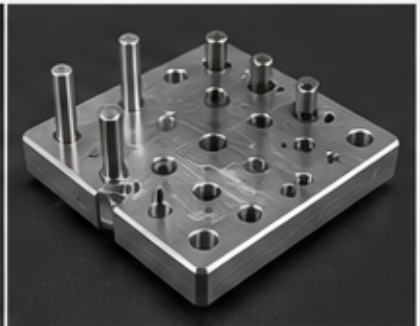
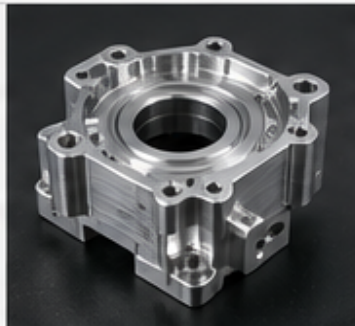


#### 3D SCANNING

Quality control and reverse engineering with high-accuracy 3D scanning.

#### IDEAL FOR:

- ✓ Prototypes & Product Development
- ✓ Fixtures, Jigs & Tooling
- ✓ Replacement Parts
- ✓ Short Run & Production Quantities
- ✓ Quality Control & Inspection
- ✓ Reverse Engineering



### LET'S BUILD SOMETHING EXCEPTIONAL TOGETHER.

Contact us today for a quote or to discuss your next project.



406 Cedar Lane Rd  
Greenville, SC 29611



info@mttmanufacturing.com



+1-864-232-2415



www.mttmanufacturing.com